

# MYSTIC MOMENTS

## CERTIFICATE OF ANALYSIS

---

Product: Lilac (LYF) Fragrant Oil  
Product Code: OFLILA  
Batch No: 4449111  
Best Before Date: October 2024

<u>DESCRIPTION</u>	<u>RESULT</u>
Specific Gravity @ 20°C	0.9593
Refractive Index @ 20°C	1.4429
Odour	Characteristic
Flash Point	>61
Appearance	Colourless to Near Colourless Liquid

## ALLERGEN DECLARATION

We hereby confirm that the following item contains the components listed below. Stated are the total levels added plus levels from natural ingredients. The information is supplied to enable compliance with Cosmetic and Detergent regulations.

### LILAC (LYF)

Ingredient	CAS	EC	Concentration (%)
Butylphenyl methylpropional	80-54-6	201-289-8	1%
Cinnamyl Alcohol	104-54-1	203-212-3	0.0417%
Citral	5392-40-5	226-394-6	0.0025%
Citronellol	106-22-9	203-375-0	0.8234%
Geraniol	106-24-1	203-377-1	6.2396%
Hydroxycitronellal	107-75-5	203-518-7	0.8333%
Isoeugenol	97-54-1	202-590-7	0.8333%
Limonene	5989-27-5	227-813-5	0.133%
Linalool	78-70-6	201-134-4	0.365%
Methyl 2-octynoate	111-12-6	203-836-6	0.0417%
alpha-iso-Methylionone	127-51-5	204-846-3	0.0958%

Please note allergens are declared above a concentration limit of 0.0001%

**Regulatory Affairs Department**

## CERTIFICATE OF CONFORMITY WITH IFRA STANDARDS

This Certificate assesses the conformity of the fragrance mixture with IFRA Standards and provides restrictions for use as necessary. It is based only on those materials subject to IFRA Standards for the toxicity endpoints described in each Standard.

This Certificate does therefore not replace a comprehensive safety assessment of the fragrance mixture.

### CERTIFYING PARTY:

MADAR Corporation Ltd  
19-20 Sandleheath Industrial Estate  
Fordingbridge  
SP6 1PA

### SCOPE OF THE CERTIFICATE:

LILAC (LYF)

### COMPULSORY INFORMATION:

We certify that the above mixture is in compliance with the Standards of the INTERNATIONAL FRAGRANCE ASSOCIATION (IFRA), up to and including the 49th Amendment to the IFRA Code of Practice (published January 2020), provided it is used in the following categories at a maximum concentration level of:

IFRA Categories [see Annex 1 below for details]	Maximum Level of use (%)
IFRA Category 1	Not approved
IFRA Category 2	0.68%
IFRA Category 3	4.00%
IFRA Category 4	13.20%
IFRA Category 5A	3.24%
IFRA Category 5B	3.24%
IFRA Category 5C	3.24%
IFRA Category 5D	1.08%
IFRA Category 6	Not approved
IFRA Category 7A	4.00%
IFRA Category 7B	4.00%
IFRA Category 8	1.08%
IFRA Category 9	10.00%
IFRA Category 10A	10.00%
IFRA Category 10B	63.00%
IFRA Category 11A	1.08%
IFRA Category 11B	1.08%
IFRA Category 12	Not limited

For other kinds of application or use at higher concentration levels, a new evaluation can be needed; please contact MADAR Corporation Ltd

### ADDITIONAL INFORMATION ABOUT INGREDIENTS

Information about presence and concentration of fragrance ingredients subject to IFRA Limits in the fragrance mixture LILAC (LYF) is as follows:

Materials with an IFRA limit:	CAS number(s):	Concentration (%) in the fragrance mixture
1-(1,2,3,4,5,6,7,8-Octahydro-2,3,8,8-tetramethyl-2-naphthyl)ethan-1-one	54464-57-2	4.1667%
10-Undecenal	112-45-8	0.0000%
2-Ethoxy-9-methylen-2,6,6-trimethyl-bicyclo (3.3.1.)nonane	68845-00-1	0.0077%
2-Methyl-3-(p-isopropylphenyl)propionaldehyde	103-95-7	0.0062%
2H-pyran-4-ol, tetrahydro-4-methyl-2-(2-methylpropyl)-	63500-71-0	0.2698%
Butylphenyl methylpropional	80-54-6	1.0000%
Cinnamyl Alcohol	104-54-1	0.0417%
Citral	5392-40-5	0.0025%
Citronellal	106-23-0	0.0000%
Citronellol	106-22-9	0.8234%
Coumarin	91-64-5	0.0000%
Geraniol	106-24-1	6.2396%
Hydroxycitronellal	107-75-5	0.8333%
Isoeugenol	97-54-1	0.8333%
Methoxy dicyclopentadiene carboxaldehyde	86803-90-9	0.0167%
Methyl 2-octynoate	111-12-6	0.0417%
Rose ketones	23726-91-2	0.0000%
alpha-iso-Methylionone	127-51-5	0.0958%
cis-4(Isopropyl)cyclohexanemethanol	13828-37-0	0.0833%
methyl ionone mixed isomers	127-42-4	0.0411%
β,β,3-Trimethylbenzenepropanol	103694-68-4	0.0104%

Regulatory Affairs Department

**ANNEX 1**

Below is an extract of information provided by IFRA in relation to types of application present in each IFRA Category. Additional information about IFRA Categories can be found in the Guidance to IFRA Standards, issued by IFRA.

IFRA Category	Product Type
IFRA Category 1	Products applied to the lips: Lip products e.g. lipstick, lip balm; Childrens toys
IFRA Category 2	Products applied to the axillae: Deodorant and antiperspirant products of all types; Body sprays/mists
IFRA Category 3	Products applied to the face/body using fingertips: Eye products e.g. eye make-up, eye moisturizer; Facial make-up; Make-up remover; Nose pore strips; Wipes for face, neck, hands, body; Facial masks; Body and face paint
IFRA Category 4	Products related to fine fragrance: Hydroalcoholic and non-hydroalcoholic fine fragrance of all types e.g. Eau de Toilette, Parfum, Cologne, solid perfume, fragrancing cream, aftershaves of all types; Ingredients of perfume and fragrance mixtures for cosmetic kits; Scent pads; Scent strips
IFRA Category 5A	Body lotion products applied to the body using the hands (palms), primarily leave on: Foot care products e.g. creams, powders; Insect repellent for application to the skin; All powders and talc (excluding baby powders and talc)
IFRA Category 5B	Face moisturizer products applied to the face using the hands (palms), primarily leave on: Facial toner; Facial moisturizers and creams
IFRA Category 5C	Hand cream products applied to the hands using the hands (palms), primarily leave on: Hand cream; Nail care products including cuticle creams; Hand sanitizers
IFRA Category 5D	Baby creams, baby oils and baby talc: Baby cream/lotion, baby oil, baby powders and talc
IFRA Category 6	Products with oral and lip exposure: Toothpaste; Mouthwash, including breath sprays; Toothpowder, strips, mouthwash tablets
IFRA Category 7A	Rinse-off products applied to the hair with some hand contact: Hair permanent or other hair chemical treatments (rinse-off) e. g. relaxers, including rinse-off hair dyes
IFRA Category 7B	Leave-on products applied to the hair with some hand contact: Hair sprays of all types e.g. pumps, aerosol sprays; Hair styling aids non sprays e.g. mousse, leave- on conditioners; Hair permanent or other hair chemical treatments (leave-on) e.g. relaxers, including leave-on hair dyes; Shampoo - Dry (waterless shampoo); Hair deodorizer
IFRA Category 8	Products with significant anogenital exposure: Intimate wipes; Tampons; Baby wipes; Toilet paper (wet)
IFRA Category 9	Products with body and hand exposure, primarily rinse off: Bar soap; Liquid soap; Shampoo of all type; Conditioner (rinse-off); Body washes and shower gels of all types; Baby wash, bath, shampoo; Bath gels, foams, mousses, salts, oils and other products added to bathwater; Cleanser for face (rinse-off); Shaving creams of all types e.g. stick, gels, foams; All depilatories (including facial) and waxes for mechanical hair removal; Foot care products (feet are placed in a bath for soaking); Shampoos for pets
IFRA Category 10A	Household care excluding aerosol / spray products: Hand wash laundry detergent; Laundry pre-treatment of all types e.g. paste, sprays, sticks; Machine laundry detergents with skin contact e.g. liquids, powders; Fabric softeners of all types including fabric softener sheets; Ironing water; Hand

	dishwashing detergent; Hard surface cleaners of all types e.g. bathroom, kitchen cleansers, furniture polish; Toilet seat wipes; Household cleaning products, other types including fabric cleaners, carpet cleaners, furniture polishes sprays and wipes, stain removers, treatment products for textiles e.g. starch sprays; Floor wax; Dry cleaning kits; Fragranced oil for lamp ring, reed diffusers, pot-pourri, liquid refills for air fresheners (non-cartridge systems), etc.
IFRA Category 10B	Household aerosol/spray products: Animal sprays applied to animals; Air freshener sprays, manual, including aerosol and pump; Aerosol/spray insecticides
IFRA Category 11A	Products with intended skin contact but minimal transfer of fragrance to skin from inert substrate without UV exposure: Feminine hygiene conventional pads, liners, interlabial pads; Diapers (baby and adult); Adult incontinence pant, pad; Toilet paper (dry)
IFRA Category 11B	Products with intended skin contact but minimal transfer of fragrance to skin from inert substrate with potential UV exposure: Tights with moisturizers; Scented socks, gloves; Facial tissues (dry tissues); Napkins; Paper towels; Wheat bags; Facial masks (paper/protective) e.g. surgical masks not used as medical device; Fertilizers, solid (pellet or powder)
IFRA Category 12	Products not intended for direct skin contact, minimal or insignificant transfer to skin: Candles of all types ; Laundry detergents for machine wash with minimal skin contact (e.g. Liquid tabs, pods); Automated air fresheners and fragrancing of all types e.g. concentrated aerosol with metered doses, plug-ins, electrical, incense, liquid refills (cartridge); Air delivery systems; Cat litter; Cell phone cases; Deodorizers/maskers not intended for skin contact e.g. fabric drying machine deodorizers, carpet powders; Fuels; Insecticides e.g. mosquito coil, paper, electrical, for clothing, excluding aerosols/sprays; Joss sticks or incense sticks; Dishwash detergent and deodorizers - for machine wash; Olfactive board games; Paints; Plastic articles (excluding toys); Scratch and sniff; Scent pack; Scent delivery system (using dry air technology); Shoe polishes; Rim blocks (Toilet)

## SAFETY DATA SHEET

In accordance with REACH Regulation EC No.1907/2006

**Product:** LILAC (LYF)

**Version:** 13

### Section 1. Identification of the substance or the mixture and of the supplier

#### 1.1 Product Identifier

**Product identifier:** LILAC (LYF) (Contains:1-(1,2,3,4,5,6,7,8-Octahydro-2,3,8-tetramethyl-2-naphthyl) ethan-1-one, Butylphenyl methylpropional, Geraniol, Isoeugenol)

**Other identifiers:** None

#### 1.2 Relevant identified uses of the substance of mixture and uses advised against

**Product uses:** For manufacturing purposes only.

#### 1.3 Details of the supplier of the safety data sheet

**Company name:** MADAR Corporation Ltd

**Company address:** 19-20 Sandleheath Industrial Estate  
Fordingbridge  
SP6 1PA  
UK

**E-Mail address:** sales@madarcorporation.co.uk

**Company phone:** +44 (0) 1425 655555

#### 1.4 Emergency telephone number

**Emergency phone:** +44 (0) 1425 655555 during office hours

### Section 2. Hazards identification

#### 2.1 Classification of the substance or mixture

##### **Classification under Regulation (EC) No 1272/2008**

**Class and category of danger:** Skin Corrosion / Irritation Category 2  
Eye Damage / Irritation Category 1  
Sensitization - Skin Category 1  
Toxic to Reproduction Category 1B  
Hazardous to the Aquatic Environment - Long-term Hazard Category 2  
H315, Causes skin irritation.  
H317, May cause an allergic skin reaction.  
H318, Causes serious eye damage.  
H360, May damage fertility or the unborn child (exposure route).  
H411, Toxic to aquatic life with long lasting effects.

#### 2.2 Label elements

**Signal word:** Danger

## SAFETY DATA SHEET

In accordance with REACH Regulation EC No.1907/2006

**Product:** LILAC (LYF)

**Version:** 13

**Hazard statements:** H315, Causes skin irritation.  
H317, May cause an allergic skin reaction.  
H318, Causes serious eye damage.  
H360, May damage fertility or the unborn child (exposure route).  
H411, Toxic to aquatic life with long lasting effects.

**Supplemental Information:** EUH208, Contains 3,7-dimethyl-1,6-octadien-3-yl acetate, Citronellol, Hydroxycitronellal, Limonene, Linalool, Methyl 2-octynoate. May produce an allergic reaction.

**Precautionary statements:** P202, Do not handle until all safety precautions have been read and understood.  
P261, Avoid breathing vapour or dust.  
P264, Wash hands and other contacted skin thoroughly after handling.  
P272, Contaminated work clothing should not be allowed out of the workplace.  
P273, Avoid release to the environment.  
P280, Wear protective gloves/eye protection/face protection.  
P302/352, IF ON SKIN: Wash with plenty of soap and water.  
P305/351/338, IF IN EYES: Rinse cautiously with water for several minutes. Remove contact lenses, if present and easy to do. Continue rinsing.  
P308/313, IF exposed or concerned: Get medical advice/attention.  
P310, Immediately call a POISON CENTER or doctor/physician.  
P333/313, If skin irritation or rash occurs: Get medical advice/attention.  
P362, Take off contaminated clothing and wash before reuse.  
P391, Collect spillage.  
P405, Store locked up.  
P501, Dispose of contents/container to approved disposal site, in accordance with local regulations.

**Pictograms:**



**Other hazards:** None

### Section 3. Composition / information on ingredients

#### 3.2 Mixtures

**Contains:**

Name	CAS	EC	REACH Registration No.	%	Classification for (CLP) 1272/2008
Geraniol	106-24-1	203-377-1		5-<10%	SCI 2-EDI 1-SS 1; H315-H317-H318,-



## SAFETY DATA SHEET

In accordance with REACH Regulation EC No.1907/2006

**Product:** LILAC (LYF)

**Version:** 13

1-(1,2,3,4,5,6,7,8-Octahydro-2,3,8,8-tetramethyl-2-naphthyl)ethan-1-one	54464-57-2	259-174-3	01-2119489989-04	1-<5%	SCI 2-SS 1B-EH C1; H315-H317-H410,-
1,3,4,6,7,8-hexahydro-4,6,6,7,8,8-hexamethylindeno(5,6-c)pyran	1222-05-5	214-946-9		1-<5%	EH A1-EH C1;H400-H410,-
2-Phenylethanol	60-12-8	200-456-2	01-2119963921-31	1-<5%	ATO 4-EDI 2;H302-H319,-
Benzyl acetate	140-11-4	205-399-7	01-2119638272-42	1-<5%	EH C3;H412,-
Butylphenyl methylpropional	80-54-6	201-289-8		1-<5%	ATO 4-SCI 2-SS 1B-REP 1B-EH C3;H302-H315-H317-H360-H412,-
Hydroxycitronellal	107-75-5	203-518-7		0.1-<1%	EDI 2-SS 1B;H317-H319,-
Isoeugenol	97-54-1	202-590-7		0.1-<1%	ATO 4-ATD 4-SCI 2-EDI 2-SS 1A;H302-H312-H315-H317-H319,-
Citronellol	106-22-9	203-375-0		0.1-<1%	SCI 2-EDI 2-SS 1B; H315-H317-H319,-
3,7-dimethyl-1,6-octadien-3-yl acetate	115-95-7	204-116-4	01-2119474016-42	0.1-<1%	SCI 2-EDI 2-SS 1B; H315-H317-H319,-
Linalool	78-70-6	201-134-4		0.1-<1%	SCI 2-EDI 2-SS 1B; H315-H317-H319,-
1-(5,6,7,8-Tetrahydro-3,5,5,6,8,8-hexamethyl-2-naphthyl)ethan-1-one	1506-02-1	216-133-4		0.1-<1%	ATO 4-EH A1-EH C1; H302-H410,-
Limonene	5989-27-5	227-813-5	01-2119529223-47	0.1-<1%	FL 3-SCI 2-SS 1-AH 1-EH A1-EH C1;H226-H304-H315-H317-H410,-
Methyl 2-octynoate	111-12-6	203-836-6	01-2120734167-55	<0.1%	SS 1A-EH A1-EH C3; H317-H400-H412,-

### Substances with Community workplace exposure limits:

Name	CAS	EC	%
(2-methoxymethylethoxy)propanol	34590-94-8	252-104-2	50-100%
Diethyl phthalate	84-66-2	201-550-6	0.1-<1%

### Substances that are persistent, bioaccumulative and toxic or very persistent and very bioaccumulative, greater than 0.1%:

Not Applicable

## Section 4. First-aid measures

### 4.1 Description of first aid measures

IF ON SKIN: Wash with plenty of soap and water.

IF IN EYES: Rinse cautiously with water for several minutes. Remove contact lenses, if present and easy to do. Continue rinsing.

IF exposed or concerned: Get medical advice/attention.

Immediately call a POISON CENTER or doctor/physician.

# SAFETY DATA SHEET

In accordance with REACH Regulation EC No.1907/2006

**Product:** LILAC (LYF)

**Version:** 13

## 4.2 Most important symptoms and effects, both acute and delayed

Causes skin irritation.

May cause an allergic skin reaction.

Causes serious eye damage.

May damage fertility or the unborn child (exposure route).

## 4.3 Indication of any immediate medical attention and special treatment needed

None expected, see Section 4.1 for further information.

## SECTION 5: Firefighting measures

### 5.1 Extinguishing media

Suitable media: Carbon dioxide, Dry chemical, Foam.

### 5.2 Special hazards arising from the substance or mixture

In case of fire, may be liberated: Carbon monoxide, Unidentified organic compounds.

### 5.3 Advice for fire fighters:

In case of insufficient ventilation, wear suitable respiratory equipment.

## Section 6. Accidental release measures

### 6.1 Personal precautions, protective equipment and emergency procedures:

Avoid inhalation. Avoid contact with skin and eyes. See protective measures under Section 7 and 8.

### 6.2 Environmental precautions:

Keep away from drains, surface and ground water, and soil.

### 6.3 Methods and material for containment and cleaning up:

Remove ignition sources. Provide adequate ventilation. Avoid excessive inhalation of vapours. Contain spillage immediately by use of sand or inert powder. Dispose of according to local regulations.

### 6.4 Reference to other sections:

Also refer to sections 8 and 13.

## Section 7. Handling and storage

### 7.1 Precautions for safe handling:

Keep away from heat, sparks, open flames and hot surfaces. - No smoking. Use personal protective equipment as required. Use in accordance with good manufacturing and industrial hygiene practices. Use in areas with adequate ventilation. Do not eat, drink or smoke when using this product.

## SAFETY DATA SHEET

In accordance with REACH Regulation EC No.1907/2006

**Product:** LILAC (LYF)

**Version:** 13

### 7.2 Conditions for safe storage, including any incompatibilities:

Store in a well-ventilated place. Keep container tightly closed. Keep cool. Ground/bond container and receiving equipment. Use explosion-proof electrical, ventilating and lighting equipment. Use only non-sparking tools. Take precautionary measures against static discharge.

### 7.3 Specific end use(s):

Use in accordance with good manufacturing and industrial hygiene practices.

## Section 8. Exposure controls/personal protection

### 8.1 Control parameters

Workplace exposure limits:

Ingredient	CAS	EC	Description	Value
(2-methoxymethylethoxy) propanol	34590-94-8	252-104-2	Long-term exposure limit (8-hour TWA) (ppm)	50
			Long-term exposure limit (8-hour TWA) (mg/m <sup>3</sup> )	308
Diethyl phthalate	84-66-2	201-550-6	Long-term exposure limit (8-hour TWA) (mg/m <sup>3</sup> )	5
			Short-term exposure limit (15-minute) (mg/m <sup>3</sup> )	10

### 8.2 Exposure Controls

#### Eye / Skin Protection

Wear protective gloves/eye protection/face protection

#### Respiratory Protection

Ensure adequate and ongoing ventilation is maintained in order to prevent build up of excessive vapour and to ensure occupational exposure limits are adhered to. If appropriate, and depending on your patterns and volumes of use, the following engineering controls may be required as additional protective measures: a) Isolate mixing rooms and other areas where this material is used or openly handled. Maintain these areas under negative air pressure relative to the rest of the plant. b) Employ the use of Personal protective equipment - an approved, properly fitted respirator with organic vapour cartridges or canisters and particulate filters. c) Use local exhaust ventilation around open tanks and other open sources of potential exposures in order to avoid excessive inhalation, including places where this material is openly weighed or measured. In addition, use general dilution ventilation of the work area to eliminate or reduce possible worker exposures. d) Use closed systems for transferring and processing this material.

Also refer to Sections 2 and 7.

## Section 9. Physical and chemical properties

### 9.1 Information on basic physical and chemical properties

**Appearance:** Colourless to near Colourless Liquid

**Odour:** Not determined

## SAFETY DATA SHEET

In accordance with REACH Regulation EC No.1907/2006

**Product:** LILAC (LYF)

**Version:** 13

<b>Odour threshold:</b>	Not determined
<b>pH:</b>	Not determined
<b>Melting point / freezing point:</b>	Not determined
<b>Initial boiling point / range:</b>	Not determined
<b>Flash point:</b>	> 61 °C
<b>Evaporation rate:</b>	Not determined
<b>Flammability (solid, gas):</b>	Not determined
<b>Upper/lower flammability or explosive limits:</b>	Product does not present an explosion hazard
<b>Vapour pressure:</b>	Not determined
<b>Vapour density:</b>	Not determined
<b>Relative density:</b>	0.9536 - 0.9656
<b>Solubility(ies):</b>	Not determined
<b>Partition coefficient: n-octanol/water:</b>	Not determined
<b>Auto-ignition temperature:</b>	Not determined
<b>Decomposition temperature:</b>	Not determined
<b>Viscosity:</b>	Not determined
<b>Explosive properties:</b>	Not expected
<b>Oxidising properties:</b>	Not expected

**9.2 Other information:** None available

### Section 10. Stability and reactivity

#### **10.1 Reactivity:**

Presents no significant reactivity hazard, by itself or in contact with water.

#### **10.2 Chemical stability:**

Good stability under normal storage conditions.

#### **10.3 Possibility of hazardous reactions:**

Not expected under normal conditions of use.

#### **10.4 Conditions to avoid:**

Avoid extreme heat.

#### **10.5 Incompatible materials:**

Avoid contact with strong acids, alkalis or oxidising agents.

#### **10.6 Hazardous decomposition products:**

Not expected.

# SAFETY DATA SHEET

In accordance with REACH Regulation EC No.1907/2006

**Product:** LILAC (LYF)

**Version:** 13

## Section 11. Toxicological information

### 11.1 Information on toxicological effects

This mixture has not been tested as a whole for health effects. The health effects have been calculated using the methods outlined in Regulation (EC) No 1272/2008 (CLP).

<b>Acute Toxicity:</b>	Based on available data the classification criteria are not met.
Acute Toxicity Oral	>5000
Acute Toxicity Dermal	>5000
Acute Toxicity Inhalation	Not Available
<b>Skin corrosion/irritation:</b>	Skin Corrosion / Irritation Category 2
<b>Serious eye damage/irritation:</b>	Eye Damage / Irritation Category 1
<b>Respiratory or skin sensitisation:</b>	Sensitization - Skin Category 1
<b>Germ cell mutagenicity:</b>	Based on available data the classification criteria are not met.
<b>Carcinogenicity:</b>	Based on available data the classification criteria are not met.
<b>Reproductive toxicity:</b>	Toxic to Reproduction Category 1B
<b>STOT-single exposure:</b>	Based on available data the classification criteria are not met.
<b>STOT-repeated exposure:</b>	Based on available data the classification criteria are not met.
<b>Aspiration hazard:</b>	Based on available data the classification criteria are not met.

### Information about hazardous ingredients in the mixture

Ingredient	CAS	EC	LD50/ATE Oral	LD50/ATE Dermal	LC50/ATE Inhalation	LC50 Route
2-Phenylethanol	60-12-8	200-456-2	500	2500	Not available	Not available
Butylphenyl methylpropional	80-54-6	201-289-8	1390	Not available	Not available	Not available

Refer to Sections 2 and 3 for additional information.

## Section 12. Ecological information

### 12.1 Toxicity:

Toxic to aquatic life with long lasting effects.

**12.2 Persistence and degradability:** Not available

**12.3 Bioaccumulative potential:** Not available

**12.4 Mobility in soil:** Not available

### 12.5 Results of PBT and vPvB assessment:

This substance does not meet the PBT/vPvB criteria of REACH, annex XIII.

### 12.6 Other adverse effects:

This material contains \*% Volatile Organic Compounds.: 74.0290121%

## SAFETY DATA SHEET

In accordance with REACH Regulation EC No.1907/2006

**Product:** LILAC (LYF)

**Version:** 13

### Section 13. Disposal considerations

#### 13.1 Waste treatment methods:

Dispose of in accordance with local regulations. Avoid disposing into drainage systems and into the environment. Empty containers should be taken to an approved waste handling site for recycling or disposal.

### Section 14. Transport information

**14.1 UN number:** UN3082

**14.2 UN Proper Shipping Name:** ENVIRONMENTALLY HAZARDOUS SUBSTANCE, LIQUID, N.O.S. (1-(1,2,3,4,5,6,7,8-Octahydro-2,3,8,8-tetramethyl-2-naphthyl)ethan-1-one, 1,3,4,6,7,8-hexahydro-4,6,6,7,8,8-hexamethylindeno(5,6-c)pyran)

**14.3 Transport hazard class(es):** 9

**Sub Risk:** -

**14.4. Packing Group:** III

**14.5 Environmental hazards:** This is an environmentally hazardous substance.

**14.6 Special precautions for user:** None additional

**14.7 Transport in bulk according to Annex II of MARPOL73/78 and the IBC Code:**  
Not applicable

### Section 15. Regulatory information

#### 15.1 Safety, health and environmental regulations/legislation specific for the substance or mixture

None additional

#### 15.2 Chemical Safety Assessment

A Chemical Safety Assessment has not been carried out for this product.

### Section 16. Other information

**Concentration % Limits:** EH C2=33.86% EH C3=3.37% SCI 2=87.67% EDI 1=48.08% EDI 2=15.51% SS 1=1.20% REP 1B=30.00%

**Total Fractional Values:** EH C2=2.95 EH C3=29.63 SCI 2=1.14 EDI 1=2.08 EDI 2=6.45 SS 1=83.33 REP 1B=3.33

#### Key to revisions:

14.2. UN proper shipping name  
Classification under Regulation (EC) No 1272/2008  
Concentration % Limits  
Product identifier  
SECTION 3: Composition/information on ingredients  
Total Fractional Values

#### Key to abbreviations:

Abbreviation	Meaning
AH 1	Aspiration Hazard Category 1

## SAFETY DATA SHEET

In accordance with REACH Regulation EC No.1907/2006

**Product:** LILAC (LYF)

**Version:** 13

ATD 4	Acute Toxicity - Dermal Category 4
ATO 4	Acute Toxicity - Oral Category 4
EDI 1	Eye Damage / Irritation Category 1
EDI 2	Eye Damage / Irritation Category 2
EH A1	Hazardous to the Aquatic Environment - Acute Hazard Category 1
EH C1	Hazardous to the Aquatic Environment - Long-term Hazard Category 1
EH C3	Hazardous to the Aquatic Environment - Long-term Hazard Category 3
FL 3	Flammable Liquid, Hazard Category 3
H226	Flammable liquid and vapour.
H302	Harmful if swallowed.
H304	May be fatal if swallowed and enters airways.
H312	Harmful in contact with skin.
H315	Causes skin irritation.
H317	May cause an allergic skin reaction.
H318	Causes serious eye damage.
H319	Causes serious eye irritation.
H360	May damage fertility or the unborn child (exposure route).
H400	Very toxic to aquatic life.
H410	Very toxic to aquatic life with long lasting effects.
H412	Harmful to aquatic life with long lasting effects.
P202	Do not handle until all safety precautions have been read and understood.
P210	Keep away from heat, sparks, open flames and hot surfaces. - No smoking.
P233	Keep container tightly closed.
P240	Ground/bond container and receiving equipment.
P241	Use explosion-proof electrical, ventilating and lighting equipment.
P242	Use only non-sparking tools.
P243	Take precautionary measures against static discharge.
P261	Avoid breathing vapour or dust.
P264	Wash hands and other contacted skin thoroughly after handling.
P270	Do not eat, drink or smoke when using this product.
P272	Contaminated work clothing should not be allowed out of the workplace.
P273	Avoid release to the environment.
P280	Wear protective gloves/eye protection/face protection.
P301/310	IF SWALLOWED: Immediately call a POISON CENTER or doctor/physician.
P301/312	IF SWALLOWED: call a POISON CENTER or doctor/physician if you feel unwell.
P302/352	IF ON SKIN: Wash with plenty of soap and water.
P303/361/353	IF ON SKIN (or hair): Remove/take off immediately all contaminated clothing. Rinse skin with water/shower.
P305/351/338	IF IN EYES: Rinse cautiously with water for several minutes. Remove contact lenses, if present and easy to do. Continue rinsing.
P308/313	IF exposed or concerned: Get medical advice/attention.
P310	Immediately call a POISON CENTER or doctor/physician.
P312	Call a POISON CENTRE or doctor/physician if you feel unwell.

## SAFETY DATA SHEET

In accordance with REACH Regulation EC No.1907/2006

**Product:** LILAC (LYF)

**Version:** 13

P330	Rinse mouth.
P331	Do not induce vomiting.
P333/313	If skin irritation or rash occurs: Get medical advice/attention.
P337/313	If eye irritation persists: Get medical advice/attention.
P362	Take off contaminated clothing and wash before reuse.
P363	Wash contaminated clothing before reuse.
P370/378	In case of fire: Use carbon dioxide, dry chemical, foam for extinction.
P391	Collect spillage.
P403/235	Store in a well-ventilated place. Keep cool.
P405	Store locked up.
P501	Dispose of contents/container to approved disposal site, in accordance with local regulations.
REP 1B	Toxic to Reproduction Category 1B
SCI 2	Skin Corrosion / Irritation Category 2
SS 1	Sensitization - Skin Category 1
SS 1A	Sensitization - Skin Category 1A
SS 1B	Sensitization - Skin Category 1B

The information in this safety data sheet is to the best of our knowledge true and accurate but all data, instructions, recommendations and/or suggestions are made without guarantee. This material has not been evaluated for safe use in e-cigarettes. Therefore Ungerer Ltd do not support the use in this particular application.



# MYSTIC MOMENTS

## CMR STATEMENT

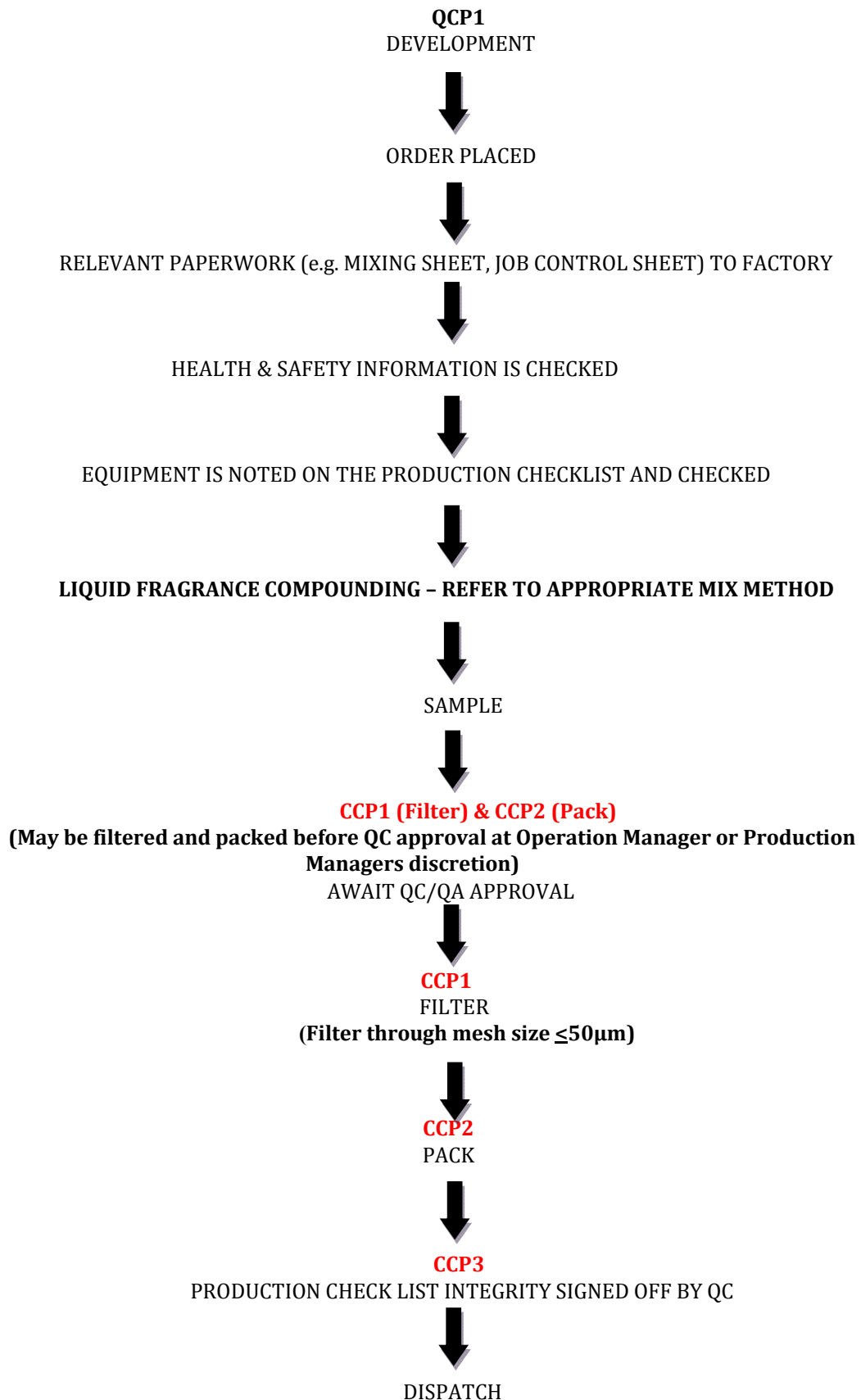
**PRODUCT: Lilac (LYF) Fragrant Oil**

MADAR Corporation Limited confirms that the above fragrance contains Lialil CAS number: 80-54-6 at 1%, which is classified according to Regulation (EC) No.1272/2008, Classification, Labelling and Packaging of substances and mixtures (CLP) Regulation as Toxic to Reproduction Category 2.

22nd November 2016

# MYSTIC MOMENTS

## FLOW DIAGRAM INDICATING THE CRITICAL CONTROL POINTS LILAC (LYF) FRAGRANCE OIL



# MYSTIC MOMENTS

## **GMO STATEMENT** **LILAC (LYF) FRAGRANT OIL**

Our Supplier of this product does not knowingly or intentionally use GMO derived materials (according to EC Regulation 1829/2003 and 1830/2003) in the manufacture of their products. It is their policy to only manufacture and sell products that are GMO free within the current limits of detection and in the knowledge that adventitious contamination cannot be excluded.

The company requires from all relevant suppliers, written assurances that materials supplied to our Supplier are free from Genetically Modified Organisms and derivatives thereof. To the best of their knowledge all products manufactured and sold by our Supplier are GMO free.